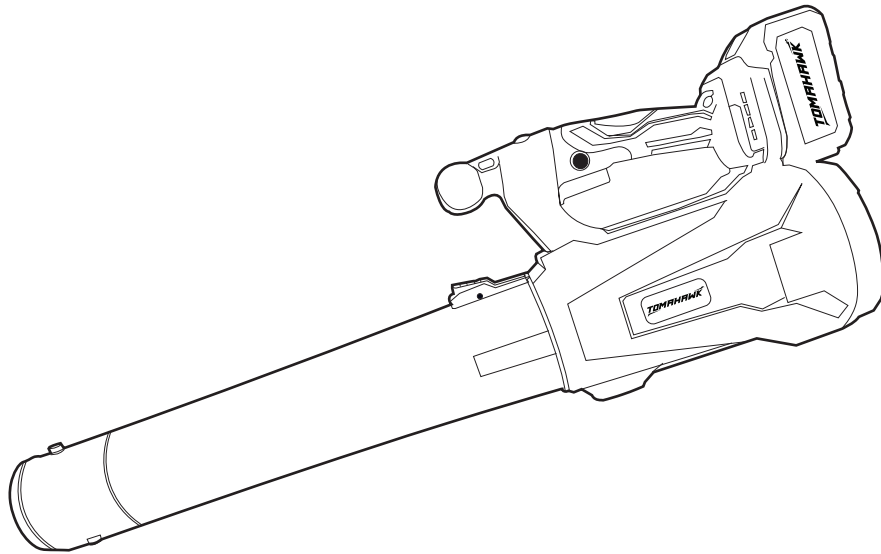


INSTRUCTION MANUAL



20 V

BATTERY VOLTAGE

3.0 AH

BATTERY CAPACITY

400 CFM

MAX AIR VOLUME

200 KM/H

AIRFLOW SPEED

17000 RPM

NO LOAD SPEED

3.8 KG

WEIGHT

CORDLESS BLOWER CLB40

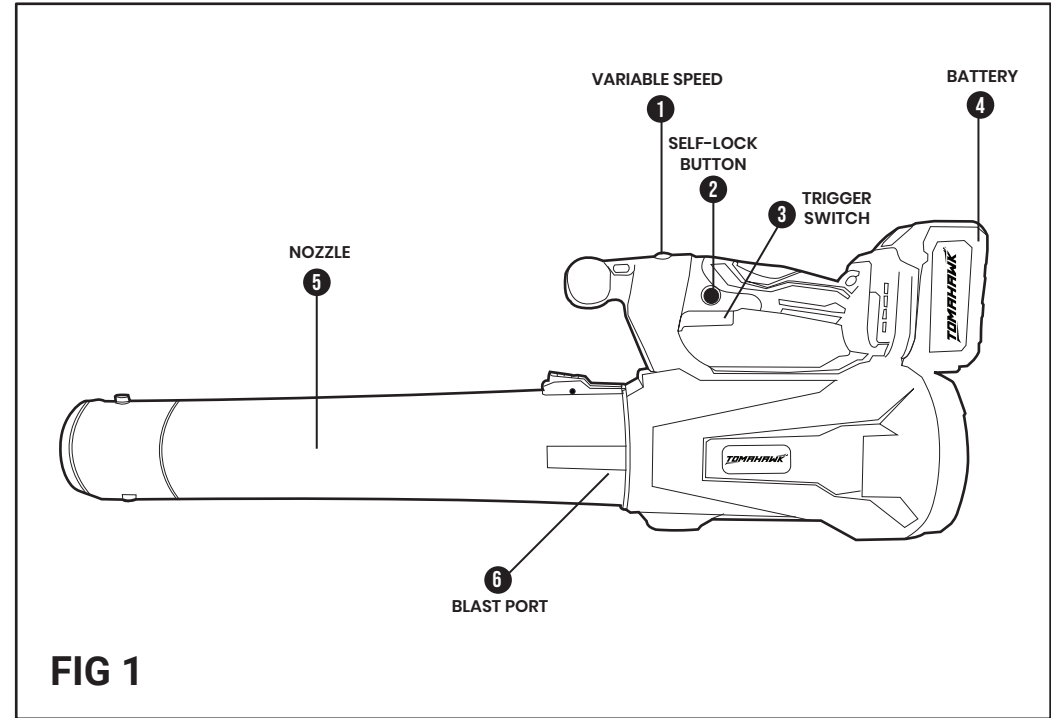


FIG 1

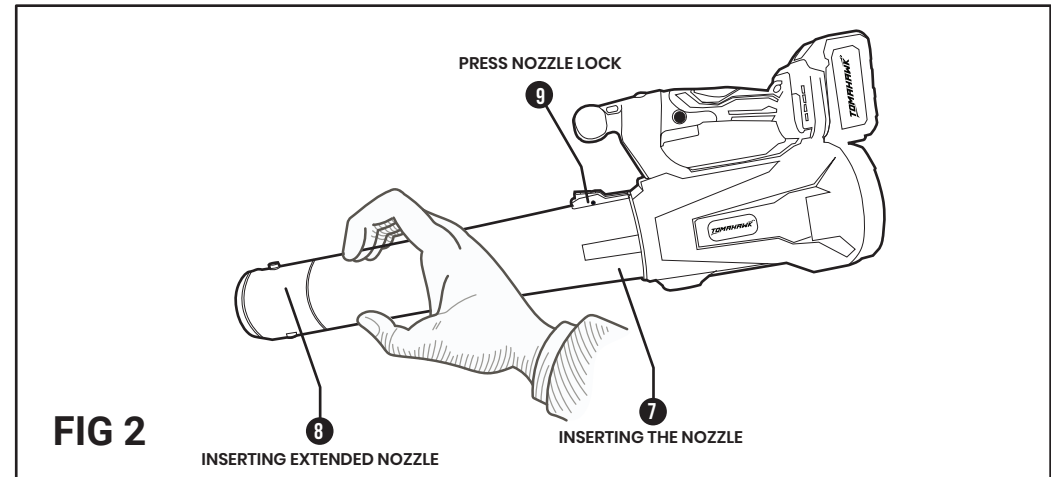
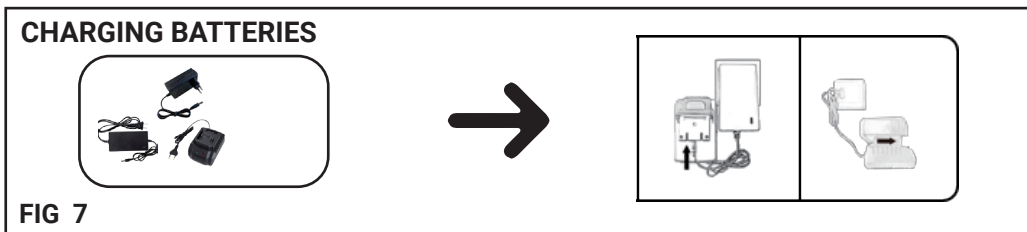
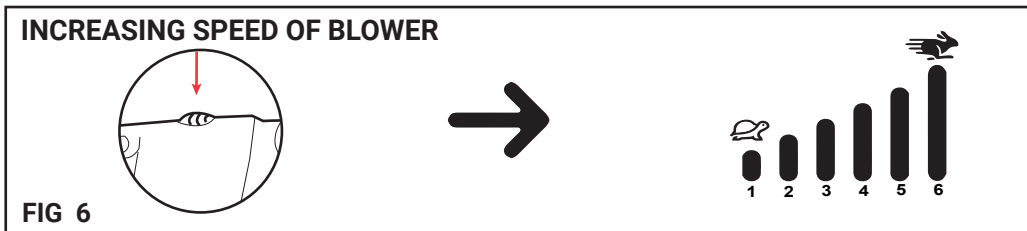
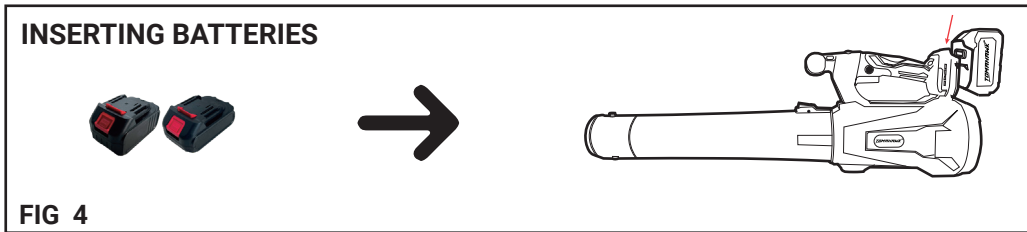
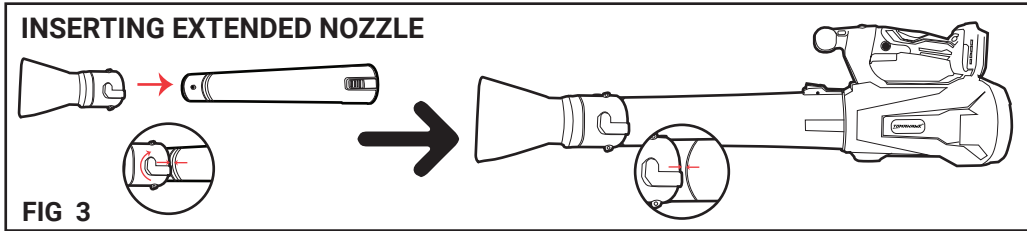


FIG 2



1. TECHNICAL DATA

SPECIFICATION	VALUE
Battery voltage	20 V
Battery Capacity	3 Ah
Weight	3.8 kg
Max Air Voulame	450 CFM
Airflow speed	200 km/h
No Load speed	17000 RPM
Usage time	20 - 60 Minutes

2. INTENDED USES & APPLICATIONS :

Blowing & cleaning dust at home, office, cars .etc. Cleaning mesh door, computers, keyboards, copy machines, printers, air conditioners, automobiles and other electronic devices

3. INSTRUCTIONS FOR USE

3.1. Mounting The Nozzle For Blowing Operations (Refer to figure 1)

- Insert the pin located inside the Nozzle into the notch provided on the Blast Port.
- To lock Nozzle in place, turn the Nozzle clockwise.
- To remove Nozzle, turn the Nozzle anticlockwise.
- **Press nozzle lock**

3.2. Operating The Blower

- To switch your Blower on, depress the Switch (3). To stop your Blower, release Switch.
- When continuous operation is required, first depress the switch and then the lock-on button (2) and to disengage lock squeeze switch (3) again.

3.3. Battery Pack Use

1. The product is compatible of replace battery packs Of 20V
2. When the battery pack is fully charged, please unplug the power.
3. The battery pack is with temperature protection, low voltage protection, and over-current protection.
4. For testing purposes, the battery pack is partially charged ex-factory. It does not necessarily mean that you have received a used product. It is advised to give the battery pack a full charge before your first-time use.
5. In case when you find the battery pack is over-heating and has noticeable sparks, smoke, or a burning smell coming out, please immediately stop use and/or disconnect the power and contact customer service.
6. Always store the battery pack, together with the machine and charger in an environment that is not wet, damp, or too high/low temperature.

3.4 Charger Use

1. Please only use the charger included in the pack for charging the battery pack. In case you want to use a third-party charger please contact Customer Service for verification before use.
2. When plugging the charger into an electric socket, the indicator light will turn on the green. When you plug the DC connector into the battery pack for charging, the indicator light on the charger will turn red and will turn green when the battery pack is fully charged.

4. Personal safety

Here are some general safety instructions for using a cordless leaf blower:

Read the instruction manual: Before using the cordless leaf blower, read the instruction manual carefully and understand the safety precautions and operating instructions.

Wear protective gear: Wear appropriate safety gear such as safety glasses, earplugs, and a dust mask to protect your eyes, ears, and lungs from dust and debris.

Check the area: Inspect the area where you plan to use the leaf blower for potential hazards such as rocks, glass, or sharp objects that could be blown around and cause injury or damage.

- Use in well-ventilated areas: Use the leaf blower in a well-ventilated area to prevent the buildup of harmful fumes and gases.
- Keep bystanders away: Keep bystanders, especially children and pets, at a safe distance from the area where you are working to prevent accidental injury.
- Don't point at people or pets: Never point the leaf blower at people, pets, or any other living thing.
- Keep the battery away from heat: Store the battery in a cool and dry place, away from heat sources or direct sunlight.
- Don't modify the blower: Never modify or alter the cordless leaf blower or its components, as this could compromise its safety and cause injury or damage.
- Use two hands to operate: Always use two hands to operate the leaf blower and maintain a firm grip on the handle.
- Turn off when not in use: Turn off the leaf blower and disconnect the battery when not in use, and store it in a safe place out of reach of children and pets.

5. SERVICE

Have your power tool serviced by a qualified Repair person using only identical replacement parts. This will ensure that the safety of the power tool is maintained.

The performance of your tool depends on the accessory used. Tomahawk accessories are engineered to high-quality standards and designed to enhance the performance of your tool. By using these accessories you will get the very best from your tool.

Warning! Before performing any maintenance, switch off and unplug the tool.

- **Regularly clean the ventilation slots in your tool using a soft brush or dry cloth.**
- For any service related queries contact us on hello@tomahawk.tools or WhatsApp on 8928949415**

6. MAINTANANCE POWER TOOLS

Maintaining your cordless blower is important to ensure that it operates effectively and lasts a long time. Here are some maintenance details to keep in mind:

Clean the blower after each use: Remove any debris or dirt from the blower using a soft brush or cloth. This helps prevent dirt and debris buildup in the blower's internal components.

Check the battery: Inspect the battery for signs of damage or wear. Make sure the battery is fully charged before each use.

Store the blower properly: When not in use, store the blower in a cool, dry place. Keep the battery separate from the blower and store it in a cool, dry place as well.

Have it serviced: If you notice any problems with your blower, such as a loss of power or strange noises, take it to a professional for servicing.

By following these maintenance details, you can keep your cordless blower in good working condition and prolong its lifespan.

For any service related queries contact us via mail on : hello@tomahawk.tools or WhatsApp us on : +91 8928949415

