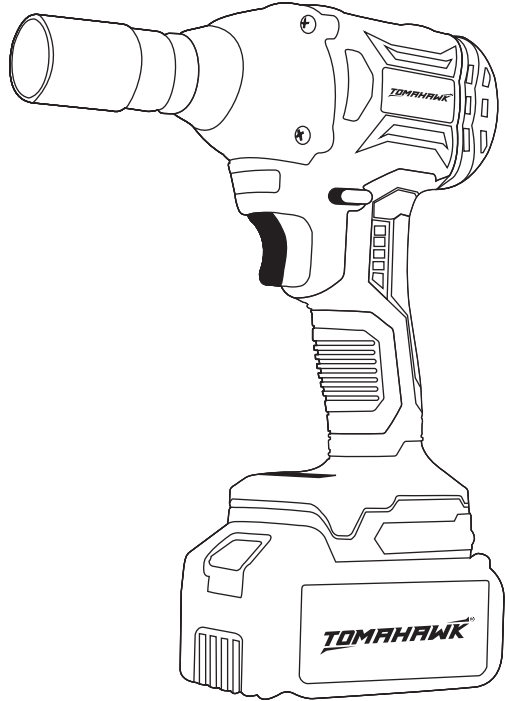




# INSTRUCTION MANUAL



**21 V**  
BATTERY VOLTAGE

**3.0 AH**  
BATTERY CAPACITY

**3400 IPM**  
IMPACT FREQUENCY

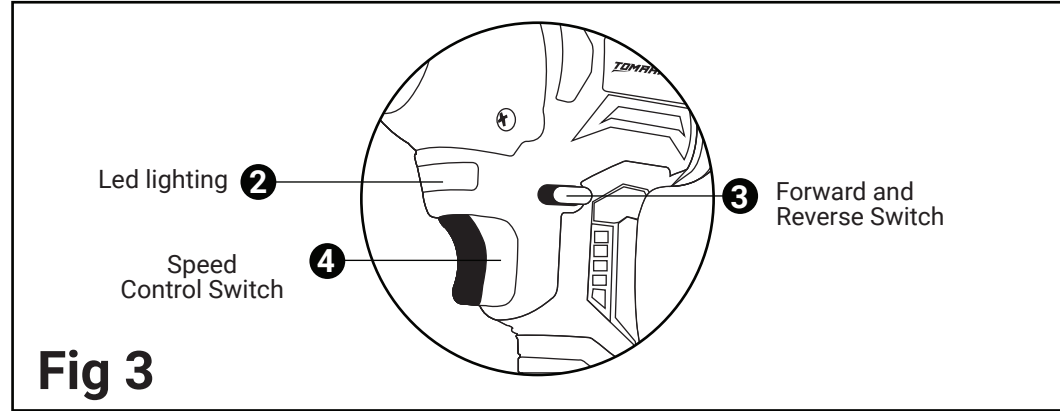
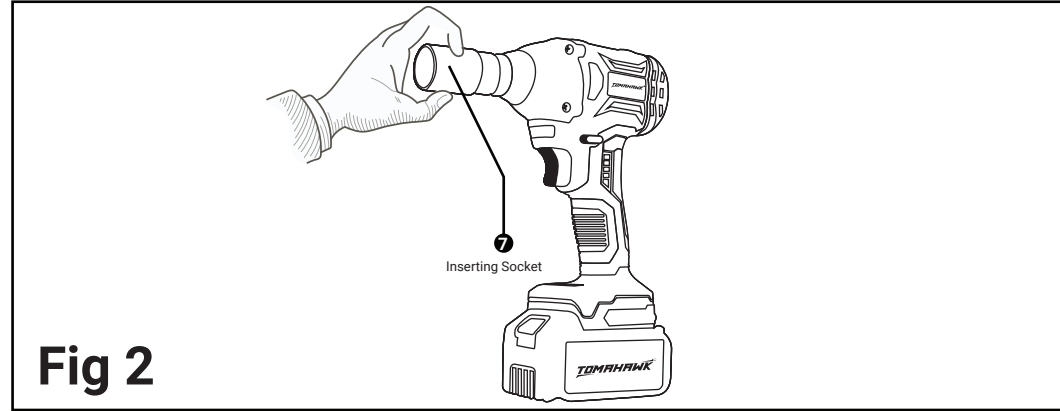
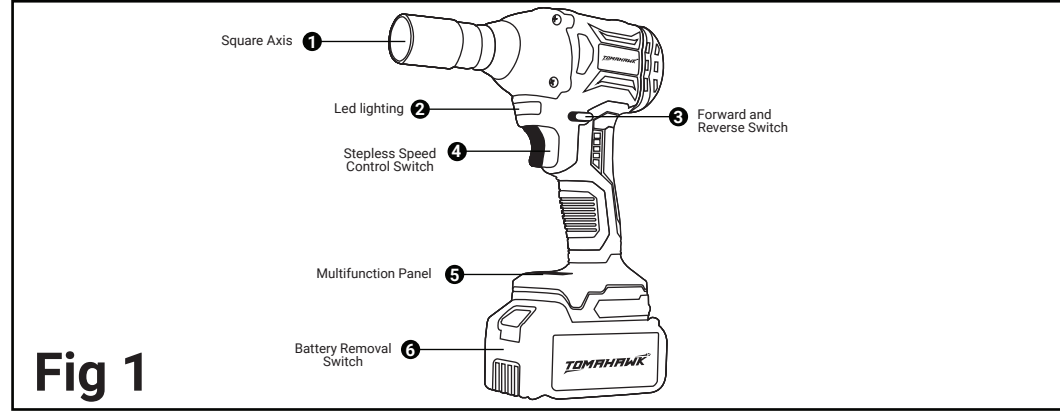
**300 NM**  
MAX TORQUE

**2400 RPM**  
NO LOAD SPEED

**4.0 KG**  
WEIGHT

## CORDLESS IMPACT WRENCH T8582

## CORDLESS IMPACT WRENCH T8582



## 1. TECHNICAL DATA

SPECIFICATION	VALUE
Battery volatage	21 V
Battery Capacity	3.0 Ah
Impact Frequency	3400 ipm
Max Torque	300 nm
No Load Speed	2400 rpm
Weight	4.0 kg

## 2. INTENDED USES & APPLICATIONS

Cordless impact wrenches are versatile tools used in a variety of applications that require high torque output. Here are some of the intended uses and applications of a cordless impact wrench:

**Automotive repair and maintenance:** A cordless impact wrench is commonly used in the automotive industry for lug nut removal and installation, as well as for various other automotive repair and maintenance tasks that require high torque output.

**Construction and building:** Cordless impact wrenches are also used in construction and building industries for tasks such as driving screws and bolts into wood, metal, and concrete.

**Heavy equipment repair:** Cordless impact wrenches are useful in repairing and maintaining heavy equipment, such as excavators, cranes, and bulldozers.

**Assembly line work:** Cordless impact wrenches are used in manufacturing and assembly line work to quickly tighten bolts and screws on products.

**DIY projects:** Cordless impact wrenches can be used for DIY projects such as building furniture, installing fences, and hanging shelves.

Overall, a cordless impact wrench is a powerful tool that is used in a variety of industries and applications where high torque output is required.

## 3. INSTRUCTIONS FOR USE

### 3.1 CONTINUOUS USE

When the machine is used continuously until the battery runs out, cool the machine for 15 minutes before replacing the new battery pack.

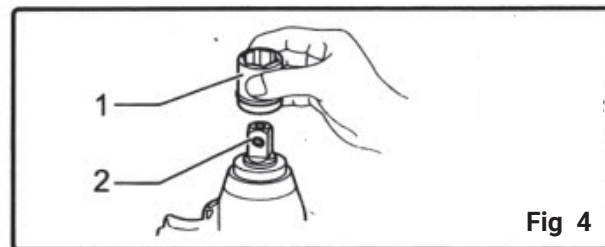
### 3.2. Inspection and Maintenance for saftey

Before the machine is sent out or used, the keeper must conduct a daily inspection; Before use, the user must carry out daily inspection; The unit using the machine must have full-time personnel for regular inspection; Check at least once a year; In hot and humid areas with frequent temperature changes or places with poor service conditions, the inspection cycle shall be shortened accordingly; Timely inspection shall be carried out before plum rain season.

### Installing or removing impact socket

**▲ CAUTION: Make sure that the impact socket and the mounting portion are not damaged before installing the impact socket.**

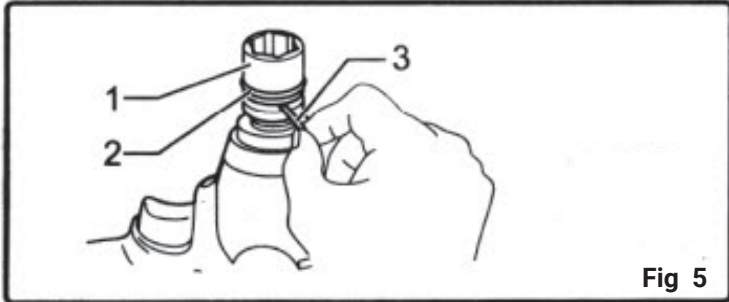
### For impact socket without O-ring and pin



1. Impact socket      2. Square drive

Align the square of the impact socket with the square drive and push the impact socket onto the square drive until it locks into place. Tap it lightly if required. To remove the impact socket, simply pull it off.

## For impact socket with O-ring and pin



1. Impact socket    2. O-ring    3. Pin

Move the O-ring out of the groove in the impact socket and remove the pin from the impact socket. Fit the impact socket onto the square drive so that the hole in the impact socket is aligned with the hole in the square drive. Insert the pin through the hole in the impact socket and square drive. Then return the O-ring to the original position in the impact socket groove to retain the pin. To remove the impact socket, follow the installation procedures in reverse

## 4. SAFETY & WARNINGS

Cordless impact wrenches are powerful tools that can be very useful for both DIY projects and professional work. However, like any power tool, they can be dangerous if not used correctly. Here are some safety and warning tips to keep in mind when using a cordless impact wrench:

**Read the manual:** Before using your cordless impact wrench, read the manual carefully and follow all safety instructions provided.

**Wear protective gear:** Always wear safety glasses or goggles, ear protection, and gloves when using a cordless impact wrench. You may also need to wear a respirator if you will be working in an area with a lot of dust or debris.

**Keep the area clear:** Make sure the area where you will be using the cordless impact wrench is clear of any debris or obstacles that could cause tripping or falling.

**Check the tool and accessories:** Before using the cordless impact wrench, check the tool and accessories for any signs of damage or wear. Make sure all bolts and nuts are tight and secure.

**Use the right accessories:** Use the correct size socket or bit for the job and make sure it is securely attached to the tool.

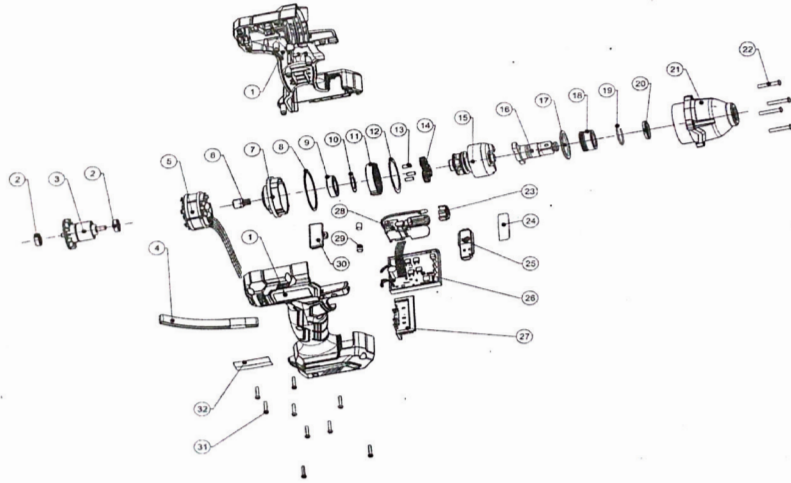
**Use both hands:** Always use both hands to grip the cordless impact wrench and keep it stable while in use.

**Use the right power:** Use the right amount of power for the job. Too much power can damage the material you are working on, while too little power can cause the tool to stall.

**Turn off when not in use:** Turn off the cordless impact wrench and remove the battery when not in use. Store it in a safe, dry place away from children and pets.

**Remember, safety is always the top priority when using power tools, so be sure to use your cordless impact wrench with care and caution.**

## 5. EXPLODED PARTS DIAGRAM.



## 6. TABLE WITH NUMBER AND NAME OF SPARES

No	Name	No	Name	No	Name
1	Left and right housing	13	Impact mechanism assembly	26	Circuit board assembly
2	Ball bearing 625DD(LFB)	14	Anvil assembly	27	Pins for battery
3	Strap	15	Drive spindle washer	28	Switch
4	Stator	16	Spindle sleeve	29	Rubber column
5	Rear seat of gearbox	17	Inner gear	30	Reversing switch level
6	Sealing gasket	18	Seal ring	31	Gross recessed pan head trilobular screw assembly ST2.9*16
7	Deep groove ball bearing 6902RS	19	Check ring for spindle sleeve	T1	Rear cover assembly of gearbox
8	Washer 16*21*0.8	20	Skeleton oil seal 18*24*3	T2	Front housing assembly of gearbox
9	Inner gear	21	Front housing of gearbox	T3	Mechanical output gearbox
10	Wahser 40*48*0.5	22	Gross recessed pan head trilobular screw assembly ST4*24	T4	DC armature
11	Planetary gear pin 4*9.7	23	LED Lampshade		
12	Planetary gear	25	Torque setting panel		

## 7. MAINTENANCE & SERVICING

Proper maintenance and servicing of your cordless impact wrench can help ensure that it performs at its best and lasts for a long time. Here are some maintenance and servicing tips for cordless impact wrenches:

**Clean regularly:** After each use, wipe down the exterior of the cordless impact wrench with a clean cloth to remove any dirt or debris. If necessary, use a soft-bristled brush to clean hard-to-reach areas.

**Check and tighten bolts:** Regularly check the bolts and screws on the cordless impact wrench to make sure they are tight and secure. If you notice any loose bolts or screws, tighten them immediately.

**Lubricate moving parts:** Lubricate the moving parts of the cordless impact wrench with a few drops of oil to keep them running smoothly. Consult the owner's manual for specific instructions on which type of lubricant to use and how often to apply it.

**Check and replace battery:** Check the battery of the cordless impact wrench regularly to make sure it is holding a charge and providing adequate power. If you notice any signs of wear or damage, replace the battery immediately.

**Store properly:** When not in use, store the cordless impact wrench in a cool, dry place away from direct sunlight, moisture, and dust. Also, remove the battery from the tool before storing it.

**Servicing:** If you notice any signs of wear or damage, such as reduced power or strange noises, take the cordless impact wrench to a qualified technician for servicing. They can diagnose and repair any issues and make sure that the tool is in good working condition.

By following these maintenance and servicing tips, you can help ensure that your cordless impact wrench stays in good working condition and lasts for a long time.

**For any service related queries contact us on [hello@tomahawk.tools](mailto:hello@tomahawk.tools) or whats app use on 8928949415**

